

Saskatoon reported 270 home sales in December, a year-over-year increase of six percent and nearly 24 percent above the 10-year average. With 5,113 annual sales, 2025 marks the second-strongest year on record in the Bridge City, up nearly two percent compared to 2024 and 22 percent above the 10-year average.

Consistent with trends seen throughout the year, Saskatoon remains the tightest market in the province, with just over two months of supply, and inventory levels 50 percent below the 10-year average. Of the 569 available units at year’s end, 130 were conditionally sold and expected to exit the market, resulting in 439 active units heading into January.

Saskatoon reported a benchmark price of \$417,700 in December, down slightly from \$421,000 in November but over six percent higher than the \$395,300 reported in December 2024.

**SALES**  
**270**

↑ 5.9% Y/Y | ↑ 1.6% YTD  
VS. 10-YEAR AVERAGE  
↑ 23.7% | ↑ 21.5% YTD

**NEW LISTINGS**  
**249**

↑ 6.0% Y/Y | ↑ 6.9% YTD  
VS. 10-YEAR AVERAGE  
↓ 19.5% | ↓ 10.0% YTD

**INVENTORY**  
**569**

↑ 1.6% Y/Y | Monthly trend\*  
VS. 10-YEAR AVERAGE  
↓ 50.1% | ↓ 48.3% YTD

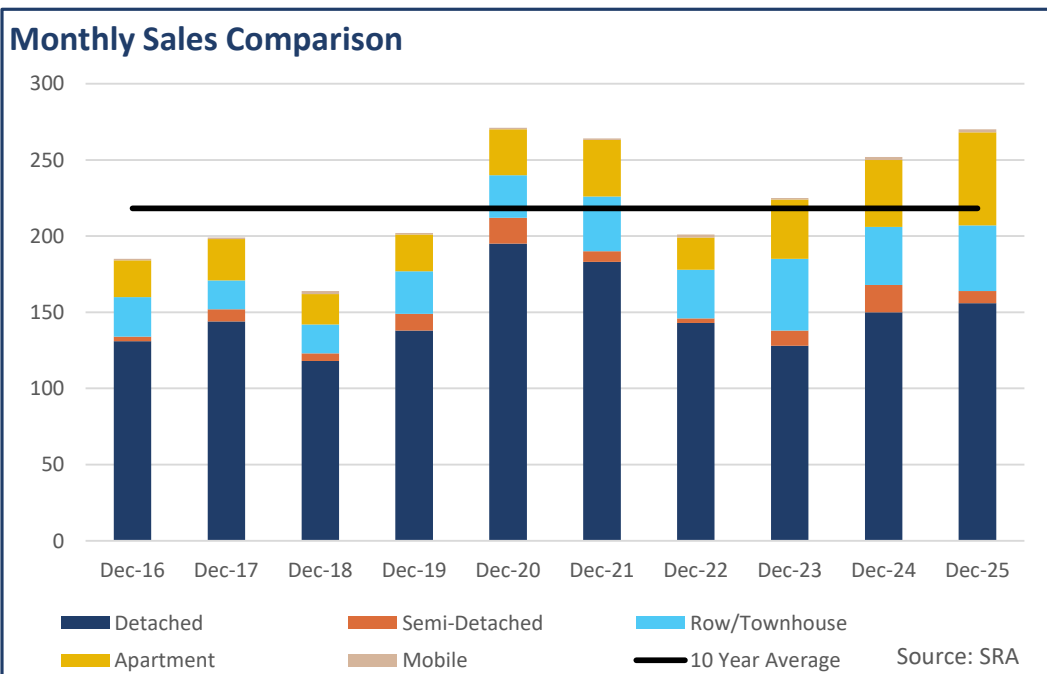
**MONTHS OF SUPPLY**  
**2.11**

↓ 4.0% Y/Y | Monthly trend\*  
VS. 10-YEAR AVERAGE  
↓ 61.9% | ↓ 59.8% YTD

## TOTAL RESIDENTIAL BENCHMARK PRICE

**\$ 417,700** | **↑ 6.4%** Y/Y

Monthly trend\*





December 2025

	Sales		New Listings		Inventory		Months of Supply		DOM	Benchmark		Avg Price	
	Actual	Y/Y%	Actual	Y/Y%	Actual	Y/Y%	Actual	Y/Y%	Actual	Actual	Y/Y%	Actual	Y/Y%
Detached	156	4%	144	1%	344	-2%	2.21	-6%	35	\$482,000	8%	\$507,331	9%
Semi-Detached	8	-56%	18	80%	24	-14%	3.00	93%	33	\$505,100	6%	\$417,800	2%
Row/Townhouse	43	13%	34	-6%	74	9%	1.72	-4%	33	\$349,300	3%	\$347,021	7%
Apartment	61	39%	49	23%	118	19%	1.93	-14%	44	\$253,300	7%	\$237,391	5%
Acreage	0	-	0	-	0	-	-	-	-	-	-	-	-
Mobile	2	0%	3	0%	4	-33%	2.00	-33%	37	-	-	\$82,500	29%
Mutli-Family	0	-100%	1	-67%	4	33%	-	-	-	-	-	-	-
<b>Total Residential</b>	<b>270</b>	<b>6%</b>	<b>249</b>	<b>6%</b>	<b>569</b>	<b>2%</b>	<b>2.11</b>	<b>-4%</b>	<b>37</b>	<b>\$417,700</b>	<b>6%</b>	<b>\$415,014</b>	<b>5%</b>

10-Year Averages

	Sales		New Listings		Inventory		Months of Supply		DOM	Benchmark		Avg Price	
	Avg	%Diff	Avg	%Diff	Avg	%Diff	Avg	%Diff	Avg	Avg	%Diff	Avg	%Diff
Total Residential	218	24%	310	-20%	1,141	-50%	5.54	-62%	50	\$333,150	25%	\$355,729	17%

Year-to-Date

December 2025

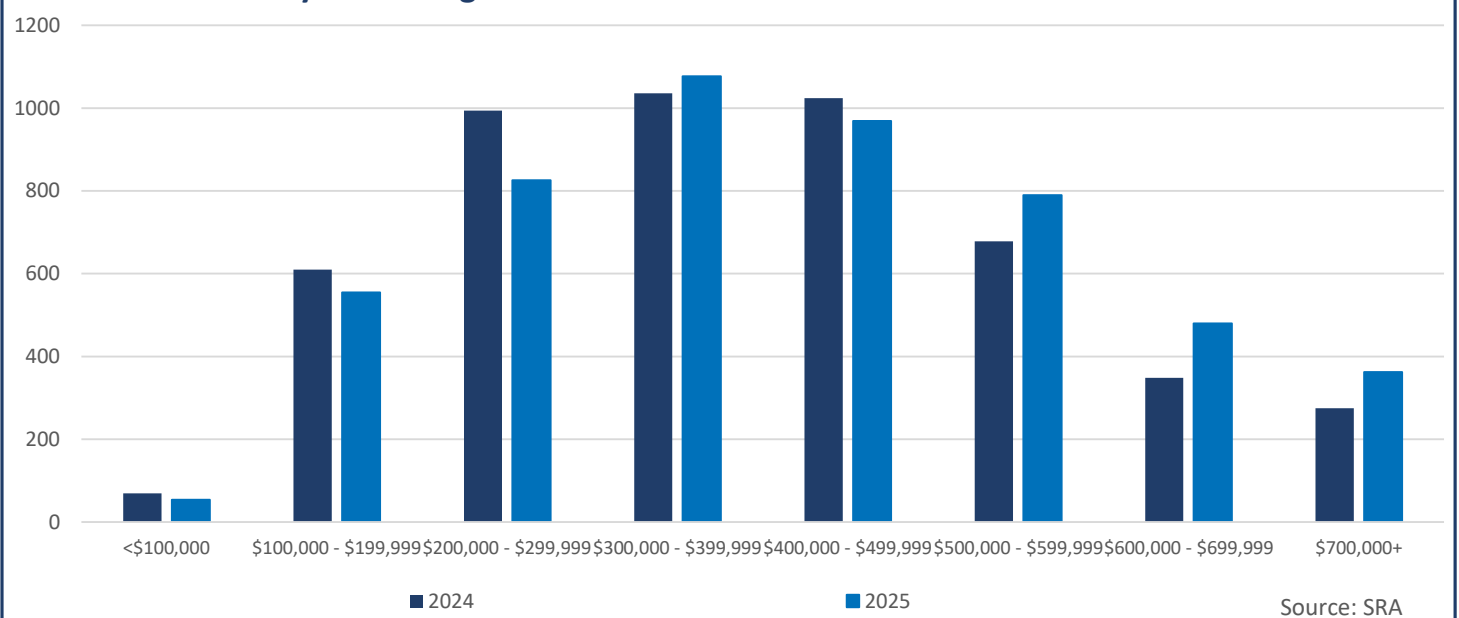
	Sales		New Listings		Inventory		Months of Supply		DOM	Benchmark		Avg Price	
	Actual	Y/Y%	Actual	Y/Y%	Actual	Y/Y%	Actual	Y/Y%	Actual	Actual	Y/Y%	Actual	Y/Y%
Detached	3,043	2%	4,439	5%	477	-8%	1.88	-9%	28	\$485,025	8%	\$504,677	8%
Semi-Detached	169	-29%	234	-18%	24	-48%	1.70	-26%	36	\$511,000	6%	\$463,692	12%
Row/Townhouse	775	0%	988	7%	95	7%	1.47	7%	27	\$349,267	8%	\$346,806	8%
Apartment	1,061	11%	1,505	20%	170	10%	1.92	0%	31	\$253,583	9%	\$251,893	5%
Acreage	0	-100%	0	-100%	0	-100%	-	-	-	-	-	-	-
Mobile	22	-21%	35	-8%	6	-8%	3.09	17%	39	-	-	\$100,323	29%
Mutli-Family	39	8%	56	6%	5	-18%	1.56	-24%	23	-	-	\$528,273	3%
<b>Total Residential</b>	<b>5,113</b>	<b>2%</b>	<b>7,263</b>	<b>7%</b>	<b>780</b>	<b>-5%</b>	<b>1.83</b>	<b>-7%</b>	<b>29</b>	<b>\$420,633</b>	<b>7%</b>	<b>\$425,410</b>	<b>7%</b>

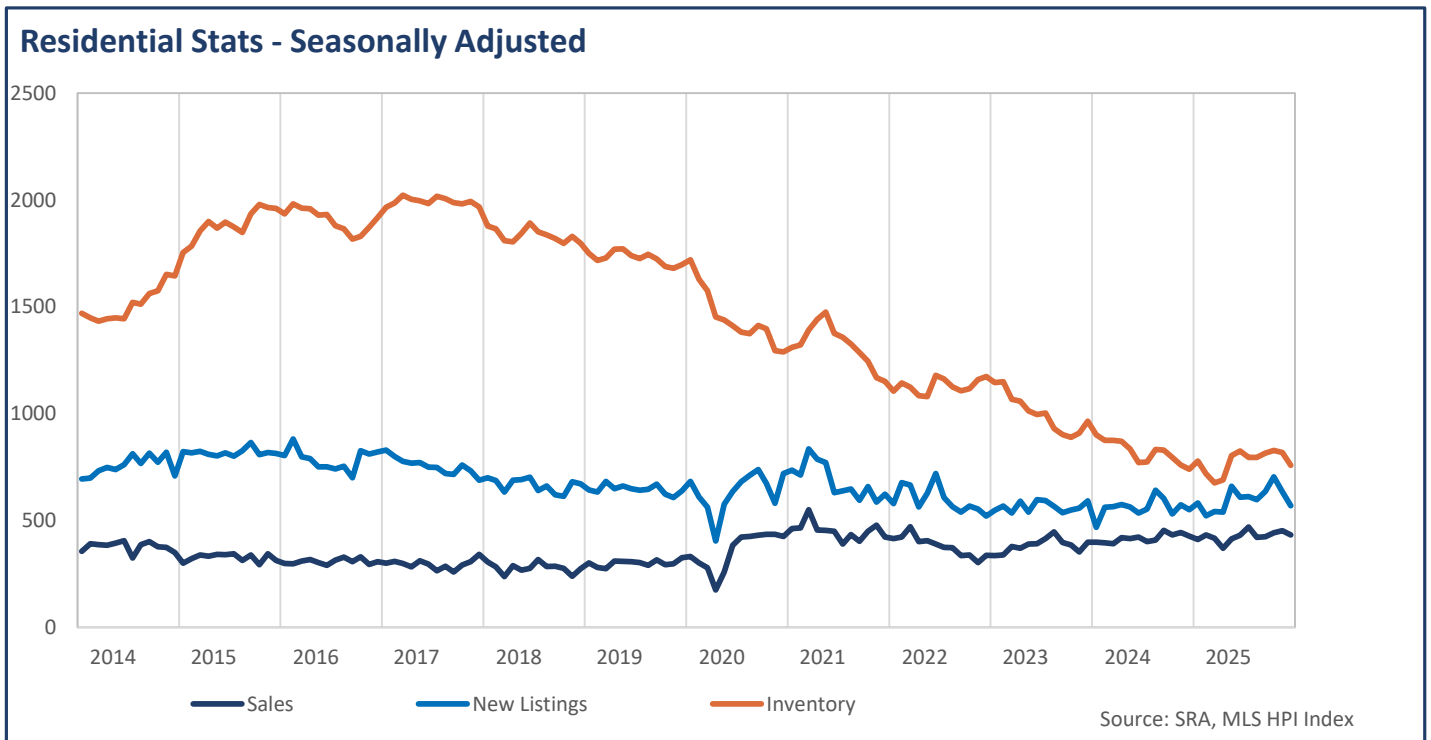
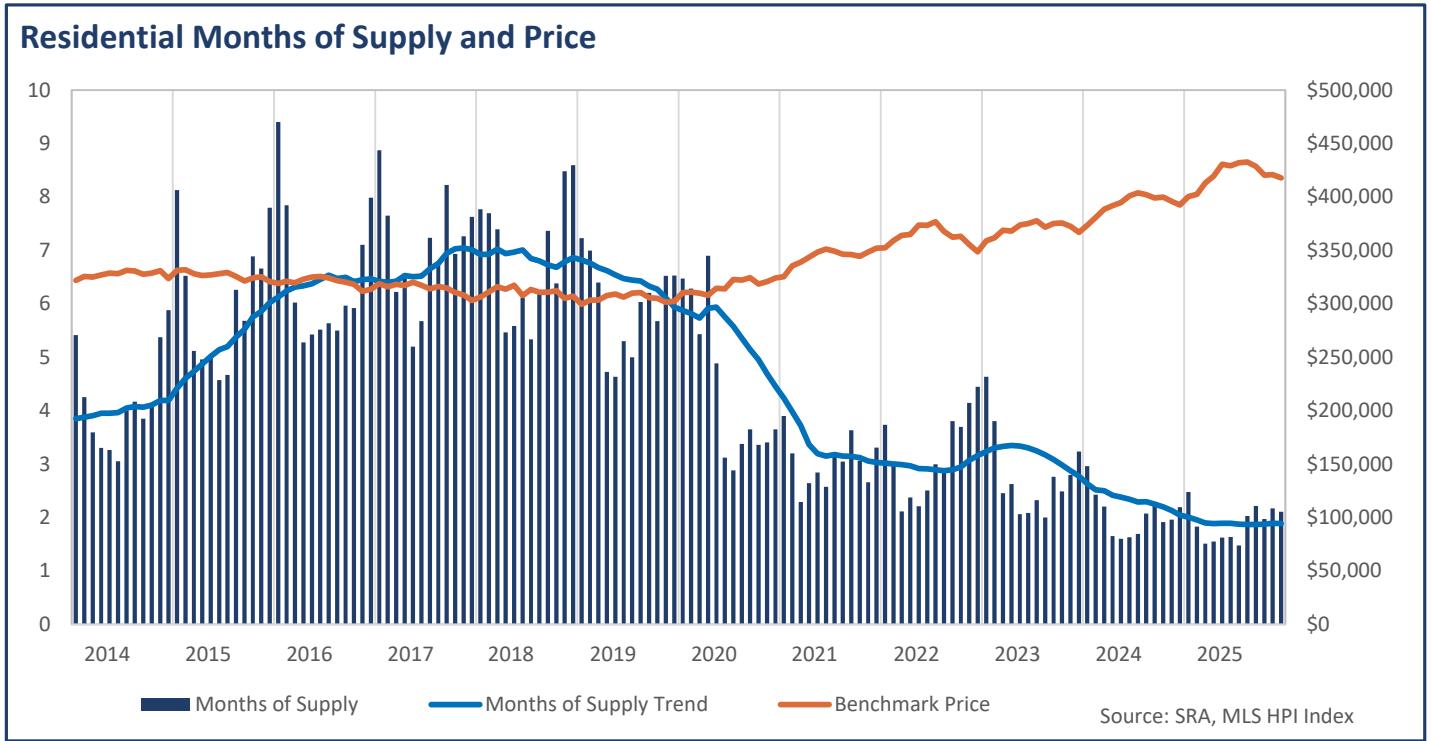
10-Year Averages

	Sales		New Listings		Inventory		Months of Supply		DOM	Benchmark		Avg Price	
	Avg	%Diff	Avg	%Diff	Avg	%Diff	Avg	%Diff	Avg	Avg	%Diff	Avg	%Diff
Total Residential	4,209	21%	8,068	-10%	1,508	-48%	4.55	-60%	45	\$336,622	25%	\$356,592	19%

Residential Sales by Price Range

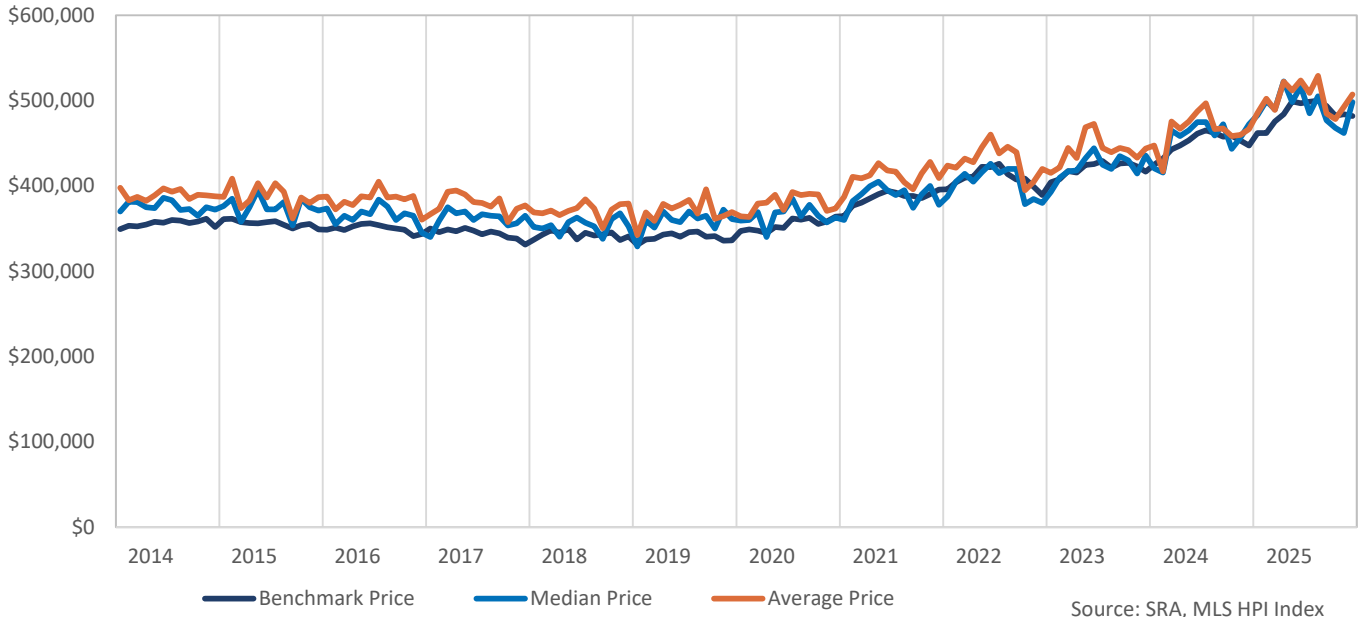
YTD-DEC



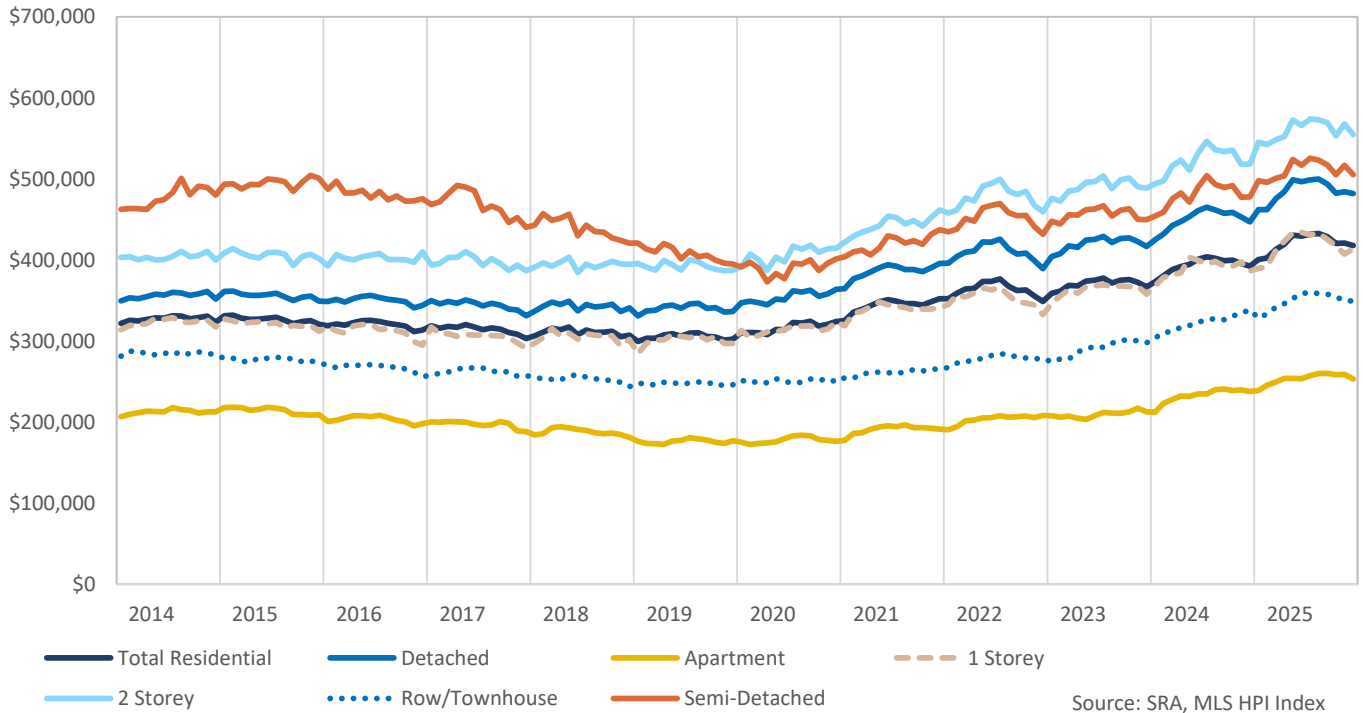




### Detached Pricing



### Benchmark Price





### HPI Benchmark Attributes

Composite	
Bedrooms, Above Ground	3
Bathrooms, Full	2
Bathrooms, Half	0
Garage	Attached, Single width
Gross Living Area, Above Ground (Sq. Ft.)	1161
Lot Size	-
Fireplaces, Number of	0
Year Built	1990
December 2025 Benchmark Price	\$417,700
Detached Share of Sales, Last 3 Years	59%
Semi-Detached Share of Sales, Last 3 Years	2%
Apartment Share of Sales, Last 3 Years	20%
Townhouse Share of Sales, Last 3 Years	15%

	Detached	1 Storey	2 Storey
Bedrooms, Above Ground	3	3	3
Bathrooms, Full	2	2	2
Bathrooms, Half	0	0	1
Garage	Attached, Double width	Attached, Single width	Attached, Double width
Gross Living Area, Above Ground (Sq. Ft.)	1245	1093	1488
Lot Size	5616	5850	5130
Fireplaces, Number of	0	0	0
Year Built	1980	1971	2008
December 2025 Benchmark Price	\$482,000	\$413,700	\$554,900
Share of Total Sales, Last 3 Years	59%	33%	32%

	Semi-Detached	Row/Townhouse	Apartment
Bedrooms, Above Ground	3	3	2
Bathrooms, Full	2	1	1
Bathrooms, Half	1	1	0
Garage	Attached, Double width	Attached, Single width	-
Gross Living Area, Above Ground (Sq. Ft.)	1163	1105	911
Fireplaces, Number of	0	0	0
Year Built	2013	2011	1992
December 2025 Benchmark Price	\$505,100	\$349,300	\$253,300
Share of Total Sales, Last 3 Years	2%	15%	20%

SASKATOON

	Sales	Y/Y%	New Listings	Y/Y%	S/NL Ratio	Inventory	Y/Y%	Months of Supply	DOM	SP/LP	Benchmark Price	Y/Y%	Median Price	Y/Y%	Average Price	Y/Y%	Index
Jan-14	228	2%	639	10%	0.36	1,234	19%	5.41	51	97.7%	321,800	2.5%	331,250	1.9%	354,497	5.0%	251.8
Feb-14	299	12%	578	21%	0.52	1,271	22%	4.25	43	97.8%	325,600	2.9%	337,400	9.4%	350,692	6.4%	254.8
Mar-14	386	12%	772	25%	0.50	1,386	24%	3.59	44	98.2%	325,000	2.1%	349,900	9.8%	353,242	5.5%	254.3
Apr-14	455	5%	887	17%	0.51	1,502	27%	3.30	41	98.1%	326,900	2.4%	341,000	0.3%	353,550	-1.2%	255.8
May-14	498	17%	954	5%	0.52	1,624	18%	3.26	36	97.7%	328,700	2.1%	336,800	-0.9%	355,677	-0.3%	257.2
Jun-14	533	13%	917	21%	0.58	1,626	18%	3.05	33	97.9%	328,200	2.3%	350,000	6.6%	360,974	2.8%	256.8
Jul-14	424	-9%	945	19%	0.45	1,696	21%	4.00	37	97.9%	331,300	3.7%	351,500	8.2%	364,439	6.6%	259.2
Aug-14	403	6%	779	4%	0.52	1,680	17%	4.17	42	97.8%	330,800	2.8%	335,000	-0.6%	352,862	2.8%	256.8
Sep-14	431	20%	910	21%	0.47	1,659	16%	3.85	40	97.8%	327,600	1.4%	342,000	4.6%	355,084	3.5%	256.3
Oct-14	385	2%	776	9%	0.50	1,594	15%	4.14	44	97.7%	328,800	3.0%	345,000	1.8%	361,381	4.7%	257.3
Nov-14	292	-1%	611	29%	0.48	1,569	23%	5.37	40	97.6%	331,000	3.4%	349,900	9.4%	360,187	4.5%	259.0
Dec-14	216	16%	345	3%	0.63	1,270	15%	5.88	48	97.6%	323,500	0.5%	337,000	2.0%	348,543	1.6%	253.1
<b>2014</b>	<b>4,550</b>	<b>8%</b>	<b>9,113</b>	<b>15%</b>	<b>0.50</b>	<b>1,509</b>	<b>19%</b>	<b>3.98</b>	<b>40</b>	<b>97.8%</b>	<b>327,433</b>	<b>2.4%</b>	<b>342,000</b>	<b>3.8%</b>	<b>356,436</b>	<b>3.3%</b>	<b>256.2</b>
Jan-15	183	-20%	731	14%	0.25	1,487	21%	8.13	55	98.0%	331,200	2.9%	330,000	-0.4%	354,724	0.1%	259.2
Feb-15	241	-19%	659	14%	0.37	1,572	24%	6.52	49	97.9%	331,900	1.9%	338,000	0.2%	364,554	4.0%	259.7
Mar-15	349	-10%	888	15%	0.39	1,786	29%	5.12	50	97.9%	328,300	1.0%	330,000	-5.7%	340,420	-3.6%	256.9
Apr-15	397	-13%	961	8%	0.41	1,969	31%	4.96	45	98.0%	326,600	-0.1%	342,500	0.4%	350,853	-0.8%	255.6
May-15	419	-16%	1,001	5%	0.42	2,088	29%	4.98	44	98.0%	327,100	-0.5%	355,800	5.6%	366,474	3.0%	255.9
Jun-15	464	-13%	1,022	11%	0.45	2,122	31%	4.57	42	97.9%	328,300	0.0%	350,000	0.0%	361,328	0.1%	256.9
Jul-15	446	5%	925	-2%	0.48	2,083	23%	4.67	48	97.4%	329,400	-0.6%	345,000	-1.8%	359,395	-1.4%	257.7
Aug-15	328	-19%	847	9%	0.39	2,054	22%	6.26	50	97.4%	325,600	-1.6%	348,425	4.0%	352,239	-0.2%	254.8
Sep-15	362	-16%	973	7%	0.37	2,057	24%	5.68	44	97.3%	321,400	-1.9%	330,000	-3.5%	333,524	-6.1%	251.5
Oct-15	291	-24%	782	1%	0.37	2,005	26%	6.89	50	97.4%	324,100	-1.4%	346,500	0.4%	354,713	-1.8%	253.6
Nov-15	281	-4%	639	5%	0.44	1,871	19%	6.66	51	97.4%	325,400	-1.7%	350,000	0.0%	360,679	0.1%	254.6
Dec-15	196	-9%	402	17%	0.49	1,528	20%	7.80	53	97.1%	320,900	-0.8%	342,500	1.6%	352,417	1.1%	251.1
<b>2015</b>	<b>3,957</b>	<b>-13%</b>	<b>9,830</b>	<b>8%</b>	<b>0.40</b>	<b>1,885</b>	<b>25%</b>	<b>5.72</b>	<b>48</b>	<b>97.7%</b>	<b>326,683</b>	<b>-0.2%</b>	<b>343,000</b>	<b>0.3%</b>	<b>354,380</b>	<b>-0.6%</b>	<b>255.6</b>
Jan-16	175	-4%	688	-6%	0.25	1,645	11%	9.40	50	96.9%	319,000	-3.7%	335,000	1.5%	352,959	-0.5%	249.6
Feb-16	230	-5%	728	10%	0.32	1,804	15%	7.84	53	96.7%	321,100	-3.3%	323,000	-4.4%	332,342	-8.8%	251.3
Mar-16	314	-10%	840	-5%	0.37	1,892	6%	6.03	47	97.2%	319,600	-2.7%	333,950	1.2%	349,115	2.6%	250.1
Apr-16	382	-4%	953	-1%	0.40	2,015	2%	5.27	46	97.7%	323,000	-1.1%	330,800	-3.4%	343,528	-2.1%	252.7
May-16	394	-6%	973	-3%	0.40	2,138	2%	5.43	42	97.2%	325,100	-0.6%	336,200	-5.5%	354,334	-3.3%	254.4
Jun-16	393	-15%	951	-7%	0.41	2,168	2%	5.52	47	97.6%	325,600	-0.8%	336,000	-4.0%	353,599	-2.1%	254.8
Jul-16	373	-16%	792	-14%	0.47	2,103	1%	5.64	49	97.1%	324,200	-1.6%	345,000	0.0%	367,366	2.2%	253.7
Aug-16	375	14%	837	-1%	0.45	2,062	0%	5.50	50	97.1%	321,700	-1.2%	335,000	-3.9%	352,718	0.1%	251.7
Sep-16	325	-10%	789	-19%	0.41	1,939	-6%	5.97	51	97.3%	320,300	-0.3%	344,900	4.5%	353,382	6.0%	250.6
Oct-16	314	8%	769	-2%	0.41	1,859	-7%	5.92	50	97.0%	318,300	-1.8%	330,000	-4.8%	343,280	-3.2%	249.1
Nov-16	251	-11%	657	3%	0.38	1,783	-5%	7.10	49	96.9%	311,700	-4.2%	337,000	-3.7%	350,389	-2.9%	243.9
Dec-16	189	-4%	397	-1%	0.48	1,509	-1%	7.98	49	96.8%	313,600	-2.3%	335,000	-2.2%	341,071	-3.2%	245.4
<b>2016</b>	<b>3,715</b>	<b>-6%</b>	<b>9,374</b>	<b>-5%</b>	<b>0.40</b>	<b>1,910</b>	<b>1%</b>	<b>6.17</b>	<b>48</b>	<b>97.2%</b>	<b>320,267</b>	<b>-2.0%</b>	<b>335,000</b>	<b>-2.3%</b>	<b>350,464</b>	<b>-1.1%</b>	<b>254.6</b>
Jan-17	187	7%	726	6%	0.26	1,659	1%	8.87	54	96.8%	318,700	-0.1%	320,000	-4.5%	341,573	-3.2%	249.4
Feb-17	227	-1%	622	-15%	0.36	1,737	-4%	7.65	54	96.7%	315,800	-1.7%	320,000	-0.9%	338,785	1.9%	247.1
Mar-17	310	-1%	854	2%	0.36	1,928	2%	6.22	48	97.1%	318,200	-0.4%	322,825	-3.3%	345,210	-1.1%	249.0
Apr-17	317	-17%	854	-10%	0.37	2,067	3%	6.52	49	97.4%	317,000	-1.9%	339,900	2.8%	361,445	5.2%	248.0
May-17	423	7%	1,039	7%	0.41	2,199	3%	5.20	48	97.1%	320,300	-1.5%	344,000	2.3%	354,289	0.0%	250.6
Jun-17	394	0%	960	1%	0.41	2,236	3%	5.68	44	97.1%	317,500	-2.5%	330,500	-1.6%	350,066	-1.0%	248.4
Jul-17	313	-16%	800	1%	0.39	2,265	8%	7.24	48	96.7%	314,000	-3.1%	325,000	-5.8%	343,068	-6.6%	245.7
Aug-17	330	-12%	812	-3%	0.41	2,229	8%	6.75	54	97.2%	316,100	-1.7%	334,200	-0.2%	338,158	-4.1%	247.3
Sep-17	261	-20%	780	-1%	0.33	2,147	11%	8.23	53	96.7%	314,800	-1.7%	322,000	-6.6%	344,198	-2.6%	246.3
Oct-17	290	-8%	721	-6%	0.40	2,010	8%	6.93	52	96.8%	310,600	-2.4%	330,000	0.0%	329,992	-3.9%	243.0
Nov-17	261	4%	587	-11%	0.44	1,896	6%	7.26	56	96.4%	308,200	-1.1%	320,000	-5.0%	341,301	-2.6%	241.2
Dec-17	204	8%	324	-18%	0.63	1,556	3%	7.63	60	96.0%	303,000	-3.4%	323,500	-3.4%	338,463	-0.8%	237.1
<b>2017</b>	<b>3,517</b>	<b>-5%</b>	<b>9,079</b>	<b>-3%</b>	<b>0.39</b>	<b>1,994</b>	<b>4%</b>	<b>6.80</b>	<b>51</b>	<b>96.9%</b>	<b>314,517</b>	<b>-1.8%</b>	<b>329,000</b>	<b>-1.8%</b>	<b>344,838</b>	<b>-1.6%</b>	<b>246.1</b>
Jan-18	202	8%	622	-14%	0.32	1,570	-5%	7.77	66	96.6%	306,400	-3.9%	330,000	3.1%	344,720	0.9%	239.7
Feb-18	210	-7%	526	-15%	0.40	1,616	-7%	7.70	57	96.4%	311,000	-1.5%	320,000	0.0%	330,549	-2.4%	243.3
Mar-18	233	-25%	671	-21%	0.35	1,723	-11%	7.39	64	96.7%	315,800	-0.8%	317,500	-1.6%	328,208	-4.9%	247.1
Apr-18	337	6%	794	-7%	0.42	1,842	-11%	5.47	52	96.8%	313,800	-1.0%	320,000	-5.9%	338,170	-6.4%	245.5
May-18	364	-14%	944	-9%	0.39	2,032	-8%	5.58	46	97.0%	317,300	-0.9%	320,000	-7.0%	332,543	-6.1%	248.3
Jun-18	351	-11%	877	-9%	0.40	2,146	-4%	6.11	47	97.0%	307,800	-3.1%	320,909	-2.9%	331,459	-5.3%	240.8
Jul-18	390	25%	712	-11%	0.55	2,081	-8%	5.34	46	97.0%	313,500	-0.2%	324,950	0.0%	337,667	-1.6%	245.3
Aug-18	330	0%	760	-6%	0.43	2,051	-8%	6.22	51	96.7%	310,700	-1.7%	316,500	-5.3%	331,264	-2.0%	243.1
Sep-18	271	4%	651	-17%	0.42	1,996	-7%	7.37	60	96.6%	310,900	-1.2%	315,000	-2.2%	319,526	-7.2%	243.3
Oct-18	286	-1%	595	-17%	0.48	1,825	-9%	6.38	57	96.3%	312,200	0.5%	316,500	-4.1%	324,535	-1.7%	244.3
Nov-18	204	-22%	534	-9%	0.38	1,730	-9%	8.48	59	96.7%	305,200	-1.0%	333,000	4.1%	342,634	0.4%	238.8
Dec-18	165	-19%	314	-3%	0.53	1,418	-9%	8.59	55	96.1%	307,100	1.4%	325,000	0.5%	337,974	-0.1%	240.3
<b>2018</b>	<b>3,343</b>	<b>-5%</b>	<b>8,000</b>	<b>-12%</b>	<b>0.42</b>	<b>1,836</b>	<b>-8%</b>	<b>6.59</b>	<b>54</b>	<b>96.7%</b>	<b>310,975</b>	<b>-1.1%</b>	<b>320,000</b>	<b>-2.7%</b>	<b>332,920</b>	<b>-3.5%</b>	<b>243.3</b>
Jan-19	201	0%	556	-11%	0.36	1,453	-7%	7.23	60	95.8%	299,500	-2.3%	285,000	-13.6%	301,368	-12.6%	234.4
Feb-19	211	0%	481	-9%	0.44	1,476	-9%	7.00	56	97.0%	303,300	-2.5%	321,900	0.6%	338,268	2.3%	237.3
Mar-19	257	10%	703	5%	0.37	1,644	-5%	6.40	57	96.7%	303,500	-3.9%	317,000	-0.2%	316,737	-3.5%	237.5
Apr-19	378	12%	777	-2%	0.49	1,787	-3%	4.73	56	97.0%	307,600	-2.0%	332,000	3.8%	342,842	1.4%	240.7
May-19	421	16%	916	-3%	0.46	1,950	-4%	4.63	47	97.2%	309,000	-2.6%	326,000	1.9%	334,016	0.4%	241.8
Jun-19	375	7%	789	-10%	0.48	1,988	-7%	5.30	49	96.7%	306,200	-0.5%	320,000	-0.3%	338,142	2.0%	239.6
Jul-19	390	0%	752	6%	0.52	1,949	-6%	5.00	52	96.8%							

SASKATOON																	
	Sales	Y/Y%	New Listings	Y/Y%	S/NL Ratio	Inventory	Y/Y%	Months of Supply	DOM	SP/LP	Benchmark Price	Y/Y%	Median Price	Y/Y%	Average Price	Y/Y%	Index
Jan-20	219	9%	571	3%	0.38	1,417	-2%	6.47	64	96.9%	310,400	3.6%	319,500	12.1%	326,278	8.3%	242.9
Feb-20	230	9%	468	-3%	0.49	1,445	-2%	6.28	72	96.5%	310,700	2.4%	318,750	-1.0%	320,249	-5.3%	243.1
Mar-20	273	6%	602	-14%	0.45	1,483	-10%	5.43	55	97.0%	310,100	2.2%	335,000	5.7%	346,849	9.5%	242.6
Apr-20	212	-44%	488	-37%	0.43	1,463	-18%	6.90	56	96.2%	307,900	0.1%	320,000	-3.6%	339,104	-1.1%	240.9
May-20	326	-23%	755	-18%	0.43	1,592	-18%	4.88	48	96.8%	314,400	1.7%	338,000	3.7%	359,304	7.6%	246.0
Jun-20	513	37%	829	5%	0.62	1,600	-20%	3.12	42	97.4%	314,000	2.5%	329,900	3.1%	334,937	-0.9%	245.7
Jul-20	547	40%	816	9%	0.67	1,575	-19%	2.88	43	97.7%	322,800	4.1%	339,000	7.3%	350,801	5.7%	252.6
Aug-20	460	42%	780	7%	0.59	1,553	-21%	3.38	42	97.6%	322,100	3.8%	335,500	8.6%	353,925	9.5%	252.0
Sep-20	429	40%	810	13%	0.53	1,567	-18%	3.65	40	97.4%	324,500	6.1%	345,000	4.6%	357,935	2.0%	253.9
Oct-20	429	41%	622	4%	0.69	1,442	-16%	3.36	42	97.3%	318,500	4.4%	330,000	9.1%	351,831	10.6%	249.2
Nov-20	358	47%	423	-6%	0.85	1,219	-23%	3.41	41	97.2%	320,700	6.4%	314,500	-3.2%	326,120	-2.1%	250.9
Dec-20	273	34%	347	14%	0.79	997	-25%	3.65	49	97.7%	324,200	7.2%	333,000	5.2%	345,579	3.5%	253.7
<b>2020</b>	<b>4,269</b>	<b>18%</b>	<b>7,511</b>	<b>-3%</b>	<b>0.57</b>	<b>1,446</b>	<b>-16%</b>	<b>4.06</b>	<b>47</b>	<b>97.2%</b>	<b>316,692</b>	<b>3.7%</b>	<b>330,000</b>	<b>3.8%</b>	<b>344,560</b>	<b>4.0%</b>	<b>247.8</b>
Jan-21	277	26%	557	-2%	0.50	1,081	-24%	3.90	55	97.5%	325,200	4.8%	312,000	-2.3%	348,359	6.8%	254.5
Feb-21	352	53%	542	16%	0.65	1,126	-22%	3.20	43	97.9%	335,600	8.0%	340,000	6.7%	353,542	10.4%	262.6
Mar-21	567	108%	926	54%	0.61	1,298	-12%	2.29	36	98.6%	339,100	9.4%	352,900	5.3%	362,165	4.4%	265.3
Apr-21	549	159%	957	96%	0.57	1,450	-1%	2.64	33	99.3%	343,600	11.6%	362,500	13.3%	373,170	10.0%	268.9
May-21	572	75%	1,016	35%	0.56	1,627	2%	2.84	34	98.8%	348,300	10.8%	369,900	9.4%	387,139	7.7%	272.5
Jun-21	605	18%	825	0%	0.73	1,559	-3%	2.58	37	98.6%	351,100	11.8%	350,000	6.1%	364,486	8.8%	274.7
Jul-21	487	-11%	758	-7%	0.64	1,561	-1%	3.21	42	98.4%	349,300	8.2%	340,000	0.3%	360,951	2.9%	273.3
Aug-21	491	7%	735	-6%	0.67	1,496	-4%	3.05	40	98.1%	346,400	7.5%	330,000	-1.6%	356,673	0.8%	271.0
Sep-21	396	-8%	651	-20%	0.61	1,438	-8%	3.63	43	97.9%	346,200	6.7%	325,250	-5.7%	341,937	-4.5%	270.9
Oct-21	425	-1%	587	-6%	0.72	1,301	-10%	3.06	43	97.9%	344,400	8.1%	356,500	8.0%	375,628	6.8%	269.5
Nov-21	413	15%	439	4%	0.94	1,099	-10%	2.66	47	98.0%	348,400	8.6%	365,000	16.1%	383,855	17.7%	272.6
Dec-21	267	-2%	293	-16%	0.91	883	-11%	3.31	45	98.1%	352,200	8.6%	345,000	3.6%	366,132	5.9%	275.6
<b>2021</b>	<b>5,401</b>	<b>27%</b>	<b>8,286</b>	<b>10%</b>	<b>0.65</b>	<b>1,327</b>	<b>-8%</b>	<b>2.95</b>	<b>40</b>	<b>98.4%</b>	<b>344,150</b>	<b>8.7%</b>	<b>349,900</b>	<b>6.0%</b>	<b>365,741</b>	<b>6.1%</b>	<b>289.3</b>
Jan-22	243	-12%	430	-23%	0.57	907	-16%	3.73	51	97.8%	352,400	8.4%	343,900	10.2%	359,587	3.2%	275.7
Feb-22	318	-10%	512	-6%	0.62	967	-14%	3.04	45	98.8%	359,100	7.0%	349,950	2.9%	358,671	1.5%	281.0
Mar-22	491	-13%	733	-21%	0.67	1,039	-20%	2.12	42	98.9%	364,100	7.4%	358,900	1.7%	370,137	2.2%	284.9
Apr-22	461	-16%	665	-31%	0.69	1,095	-24%	2.38	35	99.5%	364,900	6.2%	350,000	-3.4%	365,001	-2.2%	285.5
May-22	536	-6%	857	-16%	0.63	1,185	-27%	2.21	33	99.6%	373,700	7.3%	352,000	-4.8%	375,981	-2.9%	292.4
Jun-22	532	-12%	946	15%	0.56	1,334	-14%	2.51	30	99.8%	373,500	6.4%	363,500	3.9%	391,557	7.4%	292.3
Jul-22	448	-8%	711	-6%	0.63	1,342	-14%	3.00	31	99.1%	376,700	7.8%	336,625	-1.0%	363,504	0.7%	294.8
Aug-22	440	-10%	658	-10%	0.67	1,268	-15%	2.88	36	98.3%	367,700	6.1%	363,983	10.3%	380,131	6.6%	287.7
Sep-22	328	-17%	590	-9%	0.56	1,248	-13%	3.80	39	97.6%	362,400	4.7%	346,600	6.6%	374,298	9.5%	283.6
Oct-22	319	-25%	510	-13%	0.63	1,179	-9%	3.70	41	97.2%	363,200	5.5%	322,000	-9.7%	340,466	-9.4%	284.2
Nov-22	266	-36%	418	-5%	0.64	1,102	0%	4.14	44	97.2%	355,600	2.1%	335,500	-8.1%	349,336	-9.0%	278.2
Dec-22	202	-24%	231	-21%	0.87	898	2%	4.45	46	96.8%	348,700	-1.0%	334,800	-3.0%	371,646	1.5%	272.8
<b>2022</b>	<b>4,584</b>	<b>-15%</b>	<b>7,261</b>	<b>-12%</b>	<b>0.63</b>	<b>1,130</b>	<b>-15%</b>	<b>2.96</b>	<b>38</b>	<b>98.6%</b>	<b>363,500</b>	<b>5.6%</b>	<b>349,900</b>	<b>0.0%</b>	<b>368,838</b>	<b>0.8%</b>	<b>284.4</b>
Jan-23	201	-17%	414	-4%	0.49	931	3%	4.63	56	97.3%	359,000	1.9%	327,000	-4.9%	347,570	-3.3%	280.9
Feb-23	253	-20%	426	-17%	0.59	962	-1%	3.80	49	98.0%	361,700	0.7%	350,000	0.0%	356,597	-0.6%	283.0
Mar-23	397	-19%	582	-21%	0.68	974	-6%	2.45	46	98.3%	368,800	1.3%	353,800	-1.4%	376,608	1.7%	288.6
Apr-23	406	-12%	669	1%	0.61	1,067	-3%	2.63	40	98.3%	368,000	0.8%	336,300	-3.9%	366,626	0.4%	287.9
May-23	537	0%	765	-11%	0.70	1,107	-7%	2.06	33	99.1%	373,800	0.0%	360,000	2.3%	389,706	3.7%	292.5
Jun-23	540	2%	790	-16%	0.68	1,127	-16%	2.09	35	98.7%	375,000	0.4%	359,700	-1.0%	388,626	-0.7%	293.4
Jul-23	496	11%	703	-1%	0.71	1,153	-14%	2.32	36	98.9%	377,600	0.2%	355,000	5.5%	375,111	3.2%	295.5
Aug-23	526	20%	657	0%	0.80	1,053	-17%	2.00	36	98.8%	371,600	1.1%	350,000	-3.8%	372,825	-1.9%	296.8
Sep-23	373	14%	574	-3%	0.65	1,031	-17%	2.76	37	98.7%	375,000	3.5%	353,000	1.8%	370,647	-1.0%	293.4
Oct-23	380	19%	513	1%	0.74	946	-20%	2.49	36	98.3%	375,700	3.4%	365,000	13.4%	386,112	13.4%	294.0
Nov-23	313	18%	429	3%	0.73	876	-21%	2.80	38	97.9%	372,600	4.8%	349,900	4.3%	366,095	4.8%	291.5
Dec-23	228	13%	248	7%	0.92	737	-18%	3.23	42	98.3%	367,000	5.2%	356,825	6.6%	373,312	0.4%	287.2
<b>2023</b>	<b>4,650</b>	<b>1%</b>	<b>6,770</b>	<b>-7%</b>	<b>0.69</b>	<b>997</b>	<b>-12%</b>	<b>2.57</b>	<b>39</b>	<b>98.5%</b>	<b>370,483</b>	<b>1.9%</b>	<b>351,200</b>	<b>0.4%</b>	<b>375,142</b>	<b>1.7%</b>	<b>289.9</b>
Jan-24	245	22%	364	-12%	0.67	726	-22%	2.96	45	98.4%	373,300	4.0%	365,000	11.6%	385,259	10.8%	292.1
Feb-24	308	22%	434	2%	0.71	748	-22%	2.43	43	98.7%	380,700	5.3%	360,000	2.9%	366,305	2.7%	297.9
Mar-24	363	-9%	538	-8%	0.67	800	-18%	2.20	42	99.4%	388,400	5.3%	395,000	11.6%	403,397	7.1%	303.9
Apr-24	521	28%	727	9%	0.72	860	-19%	1.65	32	99.8%	392,000	6.5%	373,500	11.1%	394,402	7.6%	306.7
May-24	571	6%	799	4%	0.71	914	-17%	1.60	29	100.1%	394,700	5.6%	390,000	8.3%	396,224	1.7%	308.8
Jun-24	539	0%	668	-15%	0.81	880	-22%	1.63	31	99.9%	401,000	6.9%	390,000	8.4%	401,813	3.4%	313.8
Jul-24	520	5%	706	0%	0.74	879	-24%	1.69	29	99.9%	403,900	7.0%	385,000	8.5%	411,400	9.7%	316.0
Aug-24	457	-13%	719	9%	0.64	948	-10%	2.07	28	99.3%	402,200	8.2%	369,900	5.7%	389,684	4.5%	314.7
Sep-24	431	16%	654	14%	0.66	956	-7%	2.22	32	99.1%	399,100	6.4%	390,000	10.5%	411,087	10.9%	312.3
Oct-24	444	17%	517	1%	0.86	851	-10%	1.92	33	98.8%	399,800	6.4%	374,000	2.5%	400,032	3.6%	312.8
Nov-24	380	21%	434	1%	0.88	744	-15%	1.96	34	99.0%	395,900	6.3%	374,950	7.2%	399,965	9.3%	309.8
Dec-24	255	12%	235	-5%	1.09	560	-24%	2.20	41	98.5%	392,500	6.9%	385,000	7.9%	396,836	6.3%	307.1
<b>2024</b>	<b>5,034</b>	<b>8%</b>	<b>6,795</b>	<b>0%</b>	<b>0.74</b>	<b>822</b>	<b>-18%</b>	<b>1.96</b>	<b>34</b>	<b>99.4%</b>	<b>393,625</b>	<b>6.2%</b>	<b>380,000</b>	<b>8.2%</b>	<b>397,683</b>	<b>6.0%</b>	<b>308.0</b>
Jan-25	252	3%	451	24%	0.56	625	-14%	2.48	44	99.4%	400,500	7.3%	396,000	8.5%	407,780	5.8%	313.4
Feb-25	321	4%	381	-12%	0.84	587	-22%	1.83	38	99.5%	402,500	5.7%	398,000	10.6%	430,318	17.5%	314.9
Mar-25	402	11%	534	-1%	0.75	607	-24%	1.51	26	101.2%	412,900	6.3%	382,000	-3.3%	404,146	0.2%	323.1
Apr-25	440	-16%	641	-12%	0.69	683	-21%	1.55	27	102.3%	419,500	7.0%	413,615	10.7%	421,850	7.0%	328.2
May-25	544	-5%	903	13%	0.60	884	-3%	1.63	25	102.6%	430,600	9.1%	404,250	3.7%	431,111	8.8%	336.9
Jun-25	574	6%	789	18%	0.73	940	7%	1.64	23	102.8%	429,300	7.1%	430,000	10.3%	436,307	8.6%	335.9
Jul-25	608	17%	784	11%	0.78	899	2%	1.48	26	101.4%	431,900	6.					

SASKATOON

	Sales	Y/Y%	New Listings	Y/Y%	S/NL Ratio	Inventory	Y/Y%	Months of Supply	DOM	SP/LP	Benchmark Price	Y/Y%	Median Price	Y/Y%	Average Price	Y/Y%	Index
Jan-14	149	-4%	395	8%	0.38	759	14%	5.09	50	97.7%	349,500	3.0%	369,900	5.0%	397,997	7.8%	262.2
Feb-14	200	16%	379	13%	0.53	762	12%	3.81	41	97.5%	353,300	3.2%	381,500	12.0%	383,195	5.8%	265.0
Mar-14	258	12%	528	23%	0.49	859	15%	3.33	41	98.3%	352,400	1.8%	380,950	9.0%	387,126	5.7%	264.4
Apr-14	300	-3%	594	16%	0.51	931	19%	3.10	37	97.9%	354,800	2.5%	375,000	1.4%	382,422	-0.5%	266.2
May-14	340	9%	653	1%	0.52	1,018	13%	2.99	33	97.9%	357,800	2.6%	373,950	1.6%	388,895	1.3%	266.4
Jun-14	370	16%	611	17%	0.61	1,006	11%	2.72	31	98.0%	356,900	2.9%	386,000	7.3%	397,053	5.3%	267.7
Jul-14	286	-11%	653	20%	0.44	1,070	17%	3.74	32	97.9%	360,100	4.2%	383,200	7.9%	393,345	6.4%	270.1
Aug-14	268	1%	580	5%	0.46	1,085	13%	4.05	40	97.9%	359,500	3.1%	371,950	1.9%	396,281	5.7%	269.7
Sep-14	303	21%	646	18%	0.47	1,068	11%	3.52	37	97.9%	356,400	1.5%	373,000	0.8%	384,462	1.7%	267.4
Oct-14	279	-1%	524	4%	0.53	1,004	9%	3.60	38	97.6%	358,200	3.6%	365,000	0.0%	389,706	4.8%	268.7
Nov-14	197	-2%	372	18%	0.53	942	15%	4.78	36	97.8%	361,400	4.1%	374,900	4.8%	389,053	3.5%	271.1
Dec-14	140	8%	218	-3%	0.64	744	6%	5.31	43	97.3%	351,700	0.5%	372,000	3.8%	387,861	6.4%	263.8
<b>2014</b>	<b>3,090</b>	<b>5%</b>	<b>6,153</b>	<b>12%</b>	<b>0.50</b>	<b>937</b>	<b>13%</b>	<b>3.64</b>	<b>37</b>	<b>97.8%</b>	<b>356,000</b>	<b>2.8%</b>	<b>375,000</b>	<b>4.2%</b>	<b>389,820</b>	<b>4.1%</b>	<b>267.1</b>
Jan-15	125	-16%	451	14%	0.28	857	13%	6.86	51	97.7%	361,100	3.3%	376,596	1.8%	387,253	-2.7%	270.9
Feb-15	161	-20%	415	9%	0.39	888	17%	5.52	42	97.8%	361,600	2.3%	385,000	0.9%	408,469	6.6%	271.3
Mar-15	240	-7%	574	9%	0.42	1,012	18%	4.22	44	97.9%	357,700	1.5%	357,950	-6.0%	373,998	-3.4%	268.3
Apr-15	271	-10%	654	10%	0.41	1,141	23%	4.21	39	98.0%	356,400	0.5%	375,000	0.0%	382,730	0.1%	267.4
May-15	280	-18%	657	1%	0.43	1,226	20%	4.38	41	98.0%	356,300	-0.4%	395,500	5.8%	403,213	3.7%	267.3
Jun-15	332	-10%	707	16%	0.47	1,279	27%	3.85	38	98.0%	357,400	0.1%	372,500	-3.5%	386,377	-2.7%	268.1
Jul-15	298	4%	582	-11%	0.51	1,242	16%	4.17	43	97.5%	358,800	-0.4%	372,500	-2.8%	403,005	2.5%	269.2
Aug-15	219	-18%	577	-1%	0.38	1,247	15%	5.69	47	97.5%	354,400	-1.4%	381,000	2.4%	393,096	-0.8%	265.9
Sep-15	266	-12%	657	2%	0.40	1,210	13%	4.55	38	97.3%	350,000	-1.8%	353,750	-5.2%	361,851	-5.9%	262.6
Oct-15	202	-28%	512	-2%	0.39	1,181	18%	5.85	42	97.5%	354,000	-1.2%	385,000	5.5%	386,515	-0.8%	265.6
Nov-15	219	11%	390	5%	0.56	1,058	12%	4.83	46	97.5%	355,500	-1.6%	374,900	0.0%	380,090	-2.3%	266.7
Dec-15	138	-1%	258	18%	0.53	860	16%	6.23	52	97.2%	349,100	-0.7%	371,250	-0.2%	386,806	-0.3%	261.9
<b>2015</b>	<b>2,751</b>	<b>-11%</b>	<b>6,434</b>	<b>5%</b>	<b>0.43</b>	<b>1,400</b>	<b>17%</b>	<b>4.80</b>	<b>43</b>	<b>97.7%</b>	<b>356,025</b>	<b>0.0%</b>	<b>375,000</b>	<b>0.0%</b>	<b>387,480</b>	<b>-0.6%</b>	<b>267.1</b>
Jan-16	125	0%	407	-10%	0.31	906	6%	7.25	44	97.0%	348,700	-3.4%	373,500	-0.8%	387,646	0.1%	261.6
Feb-16	153	-5%	429	3%	0.36	976	10%	6.38	53	96.5%	351,300	-2.8%	355,000	-7.8%	372,416	-8.8%	263.5
Mar-16	226	-6%	550	-4%	0.41	1,012	0%	4.48	47	97.3%	348,200	-2.7%	365,000	2.0%	381,506	2.0%	261.2
Apr-16	273	1%	613	-6%	0.45	1,113	-2%	4.08	40	97.9%	352,600	-1.1%	359,900	-4.0%	377,672	-1.3%	264.5
May-16	273	-3%	636	-3%	0.43	1,224	0%	4.48	32	97.4%	355,400	-0.3%	370,000	-6.4%	387,669	-3.9%	266.6
Jun-16	281	-15%	592	-16%	0.47	1,217	-5%	4.33	42	97.7%	356,300	-0.3%	367,000	-1.5%	386,557	0.0%	267.3
Jul-16	262	-12%	505	-13%	0.52	1,169	-6%	4.46	42	97.1%	353,900	-1.4%	383,950	3.1%	404,801	0.4%	265.5
Aug-16	250	14%	558	-3%	0.45	1,178	-6%	4.71	45	97.3%	351,400	-0.8%	375,750	-1.4%	386,538	-1.7%	263.6
Sep-16	238	-11%	525	-20%	0.45	1,098	-9%	4.61	43	97.3%	350,200	0.1%	360,121	1.8%	387,557	7.1%	262.7
Oct-16	217	7%	513	0%	0.42	1,062	-10%	4.89	41	97.1%	348,500	-1.6%	368,000	-4.4%	384,194	-0.6%	261.4
Nov-16	175	-20%	395	1%	0.44	1,001	-5%	5.72	43	96.9%	341,000	-4.1%	365,000	-2.6%	388,153	2.1%	255.8
Dec-16	131	-5%	246	-5%	0.53	845	-2%	6.45	44	96.6%	343,800	-1.5%	345,000	-7.1%	360,324	-6.8%	257.9
<b>2016</b>	<b>2,604</b>	<b>-5%</b>	<b>5,969</b>	<b>-7%</b>	<b>0.44</b>	<b>1,067</b>	<b>-3%</b>	<b>4.92</b>	<b>43</b>	<b>97.2%</b>	<b>350,108</b>	<b>-1.7%</b>	<b>368,000</b>	<b>-1.9%</b>	<b>385,041</b>	<b>-0.6%</b>	<b>262.6</b>
Jan-17	135	8%	446	10%	0.30	916	1%	6.79	46	97.1%	350,100	0.4%	340,000	-9.0%	366,972	-5.3%	262.6
Feb-17	160	5%	396	-8%	0.40	950	-3%	5.94	53	96.6%	345,900	-1.5%	359,250	1.2%	373,207	0.2%	259.5
Mar-17	195	-14%	562	2%	0.35	1,095	8%	5.62	39	97.2%	348,900	0.2%	375,000	2.7%	393,040	3.0%	261.7
Apr-17	218	-20%	548	-11%	0.40	1,149	3%	5.27	43	97.8%	346,700	-1.7%	367,750	2.2%	394,731	4.5%	260.1
May-17	296	8%	706	11%	0.42	1,267	4%	4.28	43	97.4%	350,900	-1.3%	370,000	0.0%	389,928	0.6%	263.2
Jun-17	285	1%	619	5%	0.46	1,291	6%	4.53	37	97.3%	347,700	-2.4%	360,000	-1.9%	381,106	-1.4%	260.8
Jul-17	224	-15%	553	10%	0.41	1,322	13%	5.90	41	96.8%	343,400	-3.0%	367,000	-4.4%	380,183	-6.1%	257.6
Aug-17	225	-10%	553	-1%	0.41	1,316	12%	5.85	45	97.5%	346,500	-1.4%	365,000	-2.9%	375,842	-2.8%	259.9
Sep-17	182	-24%	537	2%	0.34	1,309	19%	7.19	45	97.0%	344,200	-1.7%	364,500	1.2%	385,248	-0.6%	258.2
Oct-17	213	-2%	471	-8%	0.45	1,203	13%	5.65	47	97.0%	339,300	-2.6%	353,500	-3.9%	357,466	-7.0%	254.5
Nov-17	196	12%	384	-3%	0.51	1,106	10%	6.54	52	96.6%	338,200	-0.8%	356,250	-2.4%	373,329	-3.8%	253.7
Dec-17	144	10%	190	-23%	0.76	888	5%	6.17	58	96.2%	331,300	-3.6%	364,950	5.8%	377,163	4.7%	248.5
<b>2017</b>	<b>2,473</b>	<b>-5%</b>	<b>5,965</b>	<b>0%</b>	<b>0.41</b>	<b>1,151</b>	<b>8%</b>	<b>5.59</b>	<b>45</b>	<b>97.1%</b>	<b>344,425</b>	<b>-1.6%</b>	<b>363,500</b>	<b>-1.2%</b>	<b>379,882</b>	<b>-1.3%</b>	<b>258.4</b>
Jan-18	151	12%	340	-24%	0.44	856	-7%	5.67	61	96.9%	336,800	-3.8%	352,000	3.5%	369,031	0.6%	252.7
Feb-18	140	-13%	336	-15%	0.42	895	-6%	6.39	53	96.6%	342,900	-0.9%	350,000	-2.6%	367,727	-1.5%	257.2
Mar-18	162	-17%	418	-26%	0.39	957	-13%	5.91	53	96.9%	348,100	-0.2%	353,950	-5.6%	371,204	-5.6%	261.1
Apr-18	254	17%	474	-14%	0.54	995	-13%	3.92	50	97.0%	345,000	-0.5%	340,500	-7.4%	365,878	-7.3%	258.8
May-18	257	-13%	589	-17%	0.44	1,115	-12%	4.34	39	97.3%	349,400	-0.4%	357,400	-3.4%	370,723	-4.9%	262.1
Jun-18	235	-18%	551	-11%	0.43	1,202	-7%	5.11	40	97.2%	337,100	-3.0%	363,000	0.8%	373,868	-1.9%	252.9
Jul-18	261	17%	470	-15%	0.56	1,179	-11%	4.52	45	97.1%	345,000	0.5%	357,000	-2.7%	384,427	1.1%	258.8
Aug-18	220	-2%	475	-14%	0.46	1,175	-11%	5.34	44	96.7%	342,000	-1.3%	352,500	-3.4%	373,478	-0.6%	256.6
Sep-18	183	1%	428	-20%	0.43	1,145	-13%	6.26	53	96.7%	343,200	-0.3%	338,000	-7.3%	350,286	-9.1%	257.5
Oct-18	190	-11%	385	-18%	0.49	1,050	-13%	5.53	50	96.6%	345,400	1.8%	361,000	2.1%	372,239	4.1%	259.1
Nov-18	139	-29%	347	-10%	0.40	1,007	-9%	7.24	57	97.0%	336,600	-0.5%	368,000	3.3%	378,547	1.4%	252.5
Dec-18	118	-18%	200	5%	0.59	825	-7%	6.99	50	96.3%	340,800	2.9%	352,500	-3.4%	379,428	0.6%	255.7
<b>2018</b>	<b>2,310</b>	<b>-7%</b>	<b>5,013</b>	<b>-16%</b>	<b>0.46</b>	<b>1,033</b>	<b>-10%</b>	<b>5.37</b>	<b>48</b>	<b>96.9%</b>	<b>342,692</b>	<b>-0.5%</b>	<b>353,000</b>	<b>-2.9%</b>	<b>371,484</b>	<b>-2.2%</b>	<b>257.1</b>
Jan-19	135	-11%	347	2%	0.39	842	-2%	6.24	60	96.1%	331,000	-1.7%	329,000	-6.5%	342,433	-7.2%	248.3
Feb-19	162	16%	304	-10%	0.53	835	-7%	5.15	51	97.3%	337,200	-1.7%	359,450	2.7%	368,841	0.3%	253.0
Mar-19	168	4%	448	7%	0.38	937	-2%	5.58	52	96.8%	338,000	-2.9%	351,000	-0.8%	358,891	-3.3%	253.6
Apr-19	254	0%	489	3%	0.52	1,018	2%	4.01	52	97.4%	343,100	-0.6%	370,000	8.7%	378,884	3.6%	257.4
May-19	289	12%	624	6%	0.46	1,148	3%	3.97	41	97.4%	344,400	-1.4%	360,000	0.7%	373,428	0.7%	258.4
Jun-19	266	13%	526	-5%	0.51	1,187	-1%	4.46	41	97.0%	340,600	1.0%	357,725	-1.5%	377,855	1.1%	255.5
Jul-19	253	-3%	513	9%	0.49	1,180	0%	4.66	42	97.1%	345,700	0.2%	369,900	3.6%</			

SASKATOON

	Sales	Y/Y%	New Listings	Y/Y%	S/NL Ratio	Inventory	Y/Y%	Months of Supply	DOM	SP/LP	Benchmark Price	Y/Y%	Median Price	Y/Y%	Average Price	Y/Y%	Index
Jan-20	159	18%	377	9%	0.42	848	1%	5.33	63	97.0%	347,400	5.0%	359,500	9.3%	364,475	6.4%	260.6
Feb-20	151	-7%	311	2%	0.49	878	5%	5.81	62	96.6%	349,100	3.5%	360,000	0.2%	363,744	-1.4%	261.9
Mar-20	194	15%	402	-10%	0.48	906	-3%	4.67	51	97.2%	347,500	2.8%	369,200	5.2%	379,224	5.7%	260.7
Apr-20	152	-40%	314	-36%	0.48	885	-13%	5.82	48	96.3%	344,800	0.5%	340,000	-8.1%	380,204	0.3%	258.7
May-20	241	-17%	517	-17%	0.47	968	-16%	4.02	43	97.1%	352,000	2.2%	369,000	2.5%	389,632	4.3%	264.1
Jun-20	375	41%	561	7%	0.67	958	-19%	2.55	38	97.8%	350,900	3.0%	370,000	3.4%	371,657	-1.6%	263.2
Jul-20	385	52%	556	8%	0.69	934	-21%	2.43	38	97.9%	362,000	4.7%	384,900	4.1%	392,977	2.4%	271.6
Aug-20	344	66%	530	7%	0.65	911	-25%	2.65	39	97.8%	360,300	4.0%	364,250	0.6%	389,338	5.9%	270.3
Sep-20	317	47%	548	10%	0.58	912	-23%	2.88	35	97.5%	362,600	6.6%	377,900	3.5%	390,820	-1.3%	272.0
Oct-20	317	59%	394	-5%	0.80	804	-26%	2.54	38	97.4%	355,400	4.2%	365,000	4.3%	389,882	7.9%	266.6
Nov-20	248	36%	280	-8%	0.89	651	-34%	2.63	37	97.4%	358,300	6.7%	357,300	-4.0%	370,731	1.6%	268.8
Dec-20	195	41%	196	-1%	0.99	490	-39%	2.51	40	97.7%	363,900	8.2%	363,000	0.5%	373,427	1.1%	273.0
<b>2020</b>	<b>3,078</b>	<b>25%</b>	<b>4,986</b>	<b>-3%</b>	<b>0.62</b>	<b>845</b>	<b>-18%</b>	<b>3.30</b>	<b>42</b>	<b>97.4%</b>	<b>354,517</b>	<b>4.3%</b>	<b>367,500</b>	<b>1.7%</b>	<b>381,735</b>	<b>2.6%</b>	<b>266.0</b>
Jan-21	189	19%	309	-18%	0.61	505	-40%	2.67	47	97.8%	364,600	5.0%	360,000	0.1%	387,264	6.3%	273.5
Feb-21	227	50%	318	2%	0.71	525	-40%	2.31	39	98.5%	376,900	8.0%	382,000	6.1%	410,810	12.9%	282.7
Mar-21	384	98%	568	41%	0.68	605	-33%	1.58	25	99.0%	380,300	9.4%	390,500	5.8%	408,749	7.8%	285.3
Apr-21	390	157%	632	101%	0.62	718	-19%	1.84	28	99.5%	385,300	11.7%	399,450	17.5%	412,290	8.4%	289.0
May-21	395	64%	625	21%	0.63	799	-17%	2.02	28	99.1%	390,500	10.9%	405,000	9.8%	426,732	9.5%	292.9
Jun-21	383	2%	567	1%	0.68	819	-15%	2.14	29	99.1%	394,100	12.3%	394,900	6.7%	417,968	12.5%	295.6
Jul-21	302	-22%	493	-11%	0.61	850	-9%	2.81	31	98.9%	392,200	8.3%	389,150	1.1%	416,806	6.1%	294.2
Aug-21	309	-10%	473	-11%	0.65	814	-11%	2.63	32	98.3%	388,100	7.7%	395,000	8.4%	404,260	3.8%	291.1
Sep-21	254	-20%	406	-26%	0.63	791	-13%	3.11	38	98.1%	388,200	7.1%	374,150	-1.0%	395,990	1.3%	291.2
Oct-21	296	-7%	373	-5%	0.79	698	-13%	2.36	39	98.2%	385,600	8.5%	390,000	6.8%	414,724	6.4%	289.3
Nov-21	289	17%	239	-15%	1.21	524	-20%	1.81	44	98.0%	390,400	9.0%	400,000	12.0%	428,029	15.5%	292.9
Dec-21	183	-6%	182	-7%	1.01	400	-18%	2.19	38	98.3%	395,600	8.7%	378,000	4.1%	409,073	9.5%	296.8
<b>2021</b>	<b>3,601</b>	<b>17%</b>	<b>5,185</b>	<b>4%</b>	<b>0.69</b>	<b>671</b>	<b>-21%</b>	<b>2.23</b>	<b>33</b>	<b>98.7%</b>	<b>385,983</b>	<b>8.9%</b>	<b>390,000</b>	<b>6.1%</b>	<b>412,533</b>	<b>8.1%</b>	<b>289.5</b>
Jan-22	147	-22%	233	-25%	0.63	407	-19%	2.77	43	98.0%	396,100	8.6%	387,500	7.6%	423,923	9.5%	297.1
Feb-22	190	-16%	329	3%	0.58	476	-9%	2.51	35	99.1%	404,300	7.3%	405,000	6.0%	421,377	2.6%	303.3
Mar-22	290	-24%	435	-23%	0.67	526	-13%	1.81	34	99.2%	409,700	7.7%	414,250	6.1%	432,024	5.7%	307.4
Apr-22	274	-30%	412	-35%	0.67	578	-19%	2.11	29	99.9%	411,000	6.7%	405,050	1.4%	427,649	3.7%	308.3
May-22	310	-22%	533	-15%	0.58	661	-17%	2.13	27	100.3%	422,500	8.2%	416,000	2.7%	445,091	4.3%	317.0
Jun-22	339	-11%	581	2%	0.58	727	-11%	2.14	25	100.3%	422,000	7.1%	426,000	7.9%	460,088	10.1%	316.6
Jul-22	258	-15%	478	-3%	0.54	779	-8%	3.02	27	99.7%	425,800	8.6%	414,750	6.6%	437,945	5.1%	319.4
Aug-22	288	-7%	439	-7%	0.66	744	-9%	2.58	31	98.5%	413,900	6.6%	420,000	6.3%	445,959	10.3%	310.5
Sep-22	208	-18%	405	0%	0.51	760	-4%	3.65	36	97.7%	407,300	4.9%	420,065	12.3%	439,333	10.9%	305.6
Oct-22	194	-34%	324	-13%	0.60	720	3%	3.71	40	97.4%	408,600	6.0%	378,500	-2.9%	394,906	-4.8%	306.5
Nov-22	166	-43%	273	14%	0.61	670	28%	4.04	41	97.2%	399,100	2.2%	384,700	-3.8%	404,477	-5.5%	299.4
Dec-22	143	-22%	143	-21%	1.00	534	34%	3.73	45	96.9%	389,200	-1.6%	380,000	0.5%	419,841	2.6%	292.0
<b>2022</b>	<b>2,807</b>	<b>-22%</b>	<b>4,585</b>	<b>-12%</b>	<b>0.61</b>	<b>632</b>	<b>-6%</b>	<b>2.70</b>	<b>33</b>	<b>99.0%</b>	<b>409,125</b>	<b>6.0%</b>	<b>410,000</b>	<b>5.1%</b>	<b>432,985</b>	<b>5.0%</b>	<b>306.9</b>
Jan-23	120	-18%	236	1%	0.51	536	32%	4.47	47	97.6%	404,300	2.1%	392,750	1.4%	415,305	-2.0%	303.3
Feb-23	146	-23%	257	-22%	0.57	562	18%	3.85	47	98.2%	407,900	0.9%	409,500	1.1%	421,695	0.1%	306.0
Mar-23	247	-15%	375	-14%	0.66	584	11%	2.36	43	98.6%	417,500	1.9%	417,000	0.7%	444,407	2.9%	313.2
Apr-23	247	-10%	407	-1%	0.61	640	11%	2.59	39	98.5%	415,700	1.1%	418,000	3.2%	432,682	1.2%	311.9
May-23	320	3%	461	-14%	0.69	657	-1%	2.05	31	99.5%	424,500	0.5%	432,450	4.0%	468,554	5.3%	318.5
Jun-23	321	-5%	524	-10%	0.61	699	-4%	2.18	32	98.9%	425,500	0.8%	444,000	4.2%	472,792	2.8%	319.2
Jul-23	289	12%	442	-8%	0.65	727	-7%	2.52	35	99.2%	429,200	0.8%	425,000	2.5%	444,652	1.5%	322.0
Aug-23	310	8%	416	-5%	0.75	681	-8%	2.20	34	99.1%	421,500	1.8%	420,000	0.0%	439,502	-1.4%	316.2
Sep-23	220	6%	398	-2%	0.55	697	-8%	3.17	36	98.9%	426,500	4.7%	434,950	3.5%	444,568	1.2%	320.0
Oct-23	247	27%	330	2%	0.75	618	-14%	2.50	34	98.6%	427,100	4.5%	430,000	13.6%	442,160	12.0%	320.4
Nov-23	191	15%	263	-4%	0.73	569	-15%	2.98	38	98.2%	422,700	5.9%	414,500	7.7%	432,992	7.0%	317.1
Dec-23	128	-10%	147	3%	0.87	476	-11%	3.72	47	98.4%	416,800	7.1%	435,500	14.6%	443,796	5.7%	312.7
<b>2023</b>	<b>2,786</b>	<b>-1%</b>	<b>4,256</b>	<b>-7%</b>	<b>0.65</b>	<b>621</b>	<b>-2%</b>	<b>2.67</b>	<b>37</b>	<b>98.8%</b>	<b>419,933</b>	<b>2.6%</b>	<b>425,000</b>	<b>3.7%</b>	<b>445,450</b>	<b>2.9%</b>	<b>315.0</b>
Jan-24	150	25%	235	0%	0.64	460	-14%	3.07	46	98.4%	425,000	5.1%	420,500	7.1%	447,278	7.7%	318.8
Feb-24	178	22%	255	-1%	0.70	467	-17%	2.62	47	98.6%	432,000	5.9%	415,750	1.5%	416,971	-1.1%	324.1
Mar-24	217	-12%	322	-14%	0.67	500	-14%	2.30	43	99.4%	442,800	6.1%	464,900	11.5%	475,579	7.0%	332.2
Apr-24	298	21%	442	9%	0.67	538	-16%	1.81	33	100.0%	447,400	7.6%	458,450	9.7%	466,823	7.9%	335.6
May-24	334	4%	495	7%	0.67	575	-12%	1.72	30	100.5%	453,500	6.8%	465,000	7.5%	475,477	1.5%	340.2
Jun-24	314	-2%	392	-25%	0.80	537	-23%	1.71	33	100.3%	461,100	8.4%	474,950	7.0%	487,377	3.1%	345.9
Jul-24	306	6%	444	0%	0.69	543	-25%	1.77	29	100.3%	465,300	8.4%	474,900	11.7%	496,749	11.7%	349.1
Aug-24	263	-15%	464	12%	0.57	609	-11%	2.32	28	99.6%	461,800	9.6%	459,000	9.3%	466,448	6.1%	346.4
Sep-24	272	24%	435	9%	0.63	619	-11%	2.28	29	99.6%	457,600	7.3%	472,250	8.6%	467,139	5.1%	343.3
Oct-24	284	15%	330	0%	0.86	544	-12%	1.92	34	99.0%	458,800	7.4%	443,500	3.1%	458,234	3.6%	344.2
Nov-24	230	20%	277	5%	0.83	478	-16%	2.08	33	99.4%	453,000	7.2%	456,750	10.2%	459,932	6.2%	339.8
Dec-24	150	17%	142	-3%	1.06	352	-26%	2.35	39	98.7%	447,300	7.3%	472,450	8.5%	466,622	5.1%	335.6
<b>2024</b>	<b>2,996</b>	<b>8%</b>	<b>4,233</b>	<b>-1%</b>	<b>0.71</b>	<b>519</b>	<b>-16%</b>	<b>2.08</b>	<b>34</b>	<b>99.7%</b>	<b>450,467</b>	<b>7.3%</b>	<b>458,950</b>	<b>8.0%</b>	<b>468,335</b>	<b>5.1%</b>	<b>337.9</b>
Jan-25	148	-1%	298	27%	0.50	409	-11%	2.76	44	99.6%	462,000	8.7%	483,000	14.9%	485,518	8.5%	346.6
Feb-25	187	5%	204	-20%	0.92	358	-23%	1.91	38	100.0%	462,100	7.0%	499,900	20.2%	502,279	20.5%	346.7
Mar-25	214	-1%	301	-7%	0.71	367	-27%	1.71	26	101.8%	475,500	7.4%	489,750	5.3%	488,897	2.8%	356.7
Apr-25	239	-20%	372	-16%	0.64	414	-23%	1.73	28	102.7%	484,100	8.2%	522,500	14.0%	522,076	11.8%	363.2
May-25	327	-2%	575	16%	0.57	554	-4%	1.69	24	103.3%	499,000	10.0%	498,400	7.2%	511,712	7.6%	374.3
Jun-25	343	9%	467	19%	0.73	570	6%	1.66	23	103.3%	496,800	7.7%	517,000	8.9%	523,522	7.4%	372.7
Jul-25	363	19%	488	10%	0.74	555	2%	1.53	25	101.8%	498,700	7.2%	485,000	2.1%	508,856	2.4%	374.1